

Sophos Anti-Virus Small Business Edition provides protection against all known viruses on Windows and Macintosh desktops and file servers. Specially designed to make life easier for small businesses, its award-winning detection technology is matched by its ease of use. This set-and-forget solution includes a streamlined installation process, simple management console and automatic updating.

How it works

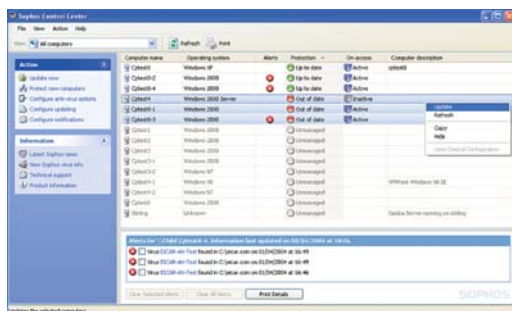
Sophos small business solutions use the same industry-leading anti-virus technologies that underpin all Sophos products.

- **End-user interface:** Even non-technical users can install and manage the software quickly and easily using the straightforward interface – deploying the software across their entire network from a central location in a matter of minutes.
- **Sophos Control Center:** An instant overview of the status of every Windows computer on the network is provided by the Sophos Control Center. This allows unprotected or new computers to be identified and virus alerts to be monitored. Shortcuts to specific tasks make the central deployment and management of Sophos Anti-Virus Small Business Edition easy.
- **Sophos AutoUpdate:** Users are always protected from the latest virus threats. Sophos AutoUpdate checks the Sophos website hourly for the latest virus and product updates, and automatically delivers new protection to all computers on the network.
- **Virus detection:** Sophos’s on-access virus detection uses a combination of techniques to minimise the impact on system resources without compromising security.

Features and benefits

The virus detection engine in Sophos Small Business Edition is tailored to suit the needs of small businesses.

- Protects Windows and Macintosh desktops and file servers.
- Installs from a central location to protect the entire network.
- Detects and disinfects macro viruses, boot sector viruses and portable executable viruses, as well as viruses in Outlook Express mailboxes.
- Monitors all virus entry points, including disks, programs, documents, network drives and CD-ROMs, as well as email and internet downloads at the desktop.
- Reduces scanning overheads by intelligently recognising uninfected file types.
- Allows virus checking to be performed automatically at scheduled times.
- Features an “immediate mode” which allows virus checking on demand.
- Provides automatic centralised reporting of virus incidents on the network.
- Synchronises updates automatically over the internet direct from Sophos using Sophos AutoUpdate.
- Updates roaming laptop users – either manually or via a scheduler – from their company’s website or directly from Sophos.
- Cannot be disabled by end users.
- Includes access to the Sophos support knowledgebase and unlimited 24-hour telephone and email support, 365 days a year.



Sophos Control Center: centralised management of Sophos Anti-Virus Small Business Edition on Windows computers

Function	Protects desktop computers, laptops and file servers by detecting, reporting and disinfecting viruses.
Virus scanning	Provides on-access, on-demand and scheduled scans of all potential virus entry points, including boot sectors, programs, documents, disks, network drives and CD-ROMs, as well as email and internet downloads to the desktop. Sophos's Intelligent File Recognition techniques scan only those file types that are capable of being infected, reducing scanning overheads.
Detection and disinfection	Viruses, worms, Trojan horses and malicious spyware are all detected, including those in compressed and recursive archives. Macro viruses, boot sector viruses, portable executable viruses and viruses in Outlook Express mailboxes are all disinfecting.
Automatic updating	Virus identity files are typically 1-2 KB and are updated automatically over the internet from Sophos by Sophos AutoUpdate. Users connecting to the internet via a modem can also set an option to check for updates on detection of a dial-up connection.
Minimum system requirements	<p>Windows desktop computers</p> <p><i>Operating system and service packs (SP):</i> Windows 98 SE/Me plus Internet Explorer 5. Windows 2000 Pro/Server plus SP2. Windows XP Home or XP Pro plus SP1. Windows 2003 (no SP).</p> <p><i>Disk space and memory:</i> 90 MB free disk space. Windows 98 SE/Me – minimum RAM 48 MB, 64 MB recommended. Windows 2000 Pro/2000 Server/XP Home/XP Pro/2003 Server – minimum 128 MB, 256 MB recommended.</p> <p>Server computer (including Sophos Control Center)</p> <p><i>Operating system and service packs (SP):</i> Windows 2000 plus SP2. Windows XP Pro plus SP1. Windows 2003 (no SP).</p> <p>Note: We recommend that Server operating systems are used, i.e. Windows Server with SP2+ or Windows 2003.</p> <p><i>Disk space and memory:</i> 240 MB free disk space, 256 MB RAM.</p> <p>Mac OS X computers</p> <p><i>Operating system:</i> Mac OS X 10.2 and higher.</p> <p><i>Disk space and memory:</i> 70 MB free disk space, 128 MB RAM.</p>
Language versions	<p><i>Windows and Sophos Control Center:</i> English, Japanese, German, French, Spanish, Brazilian Portuguese, Italian, Simplified Chinese, Korean and Traditional Chinese.</p> <p><i>Macintosh:</i> English, Japanese, German, French and Spanish.</p>

30-day evaluation software can be obtained from <http://www.sophos.com/trysbs>

fs/041208